

D-TYPE

D-TYPE WATERTUBE STEAM BOILER

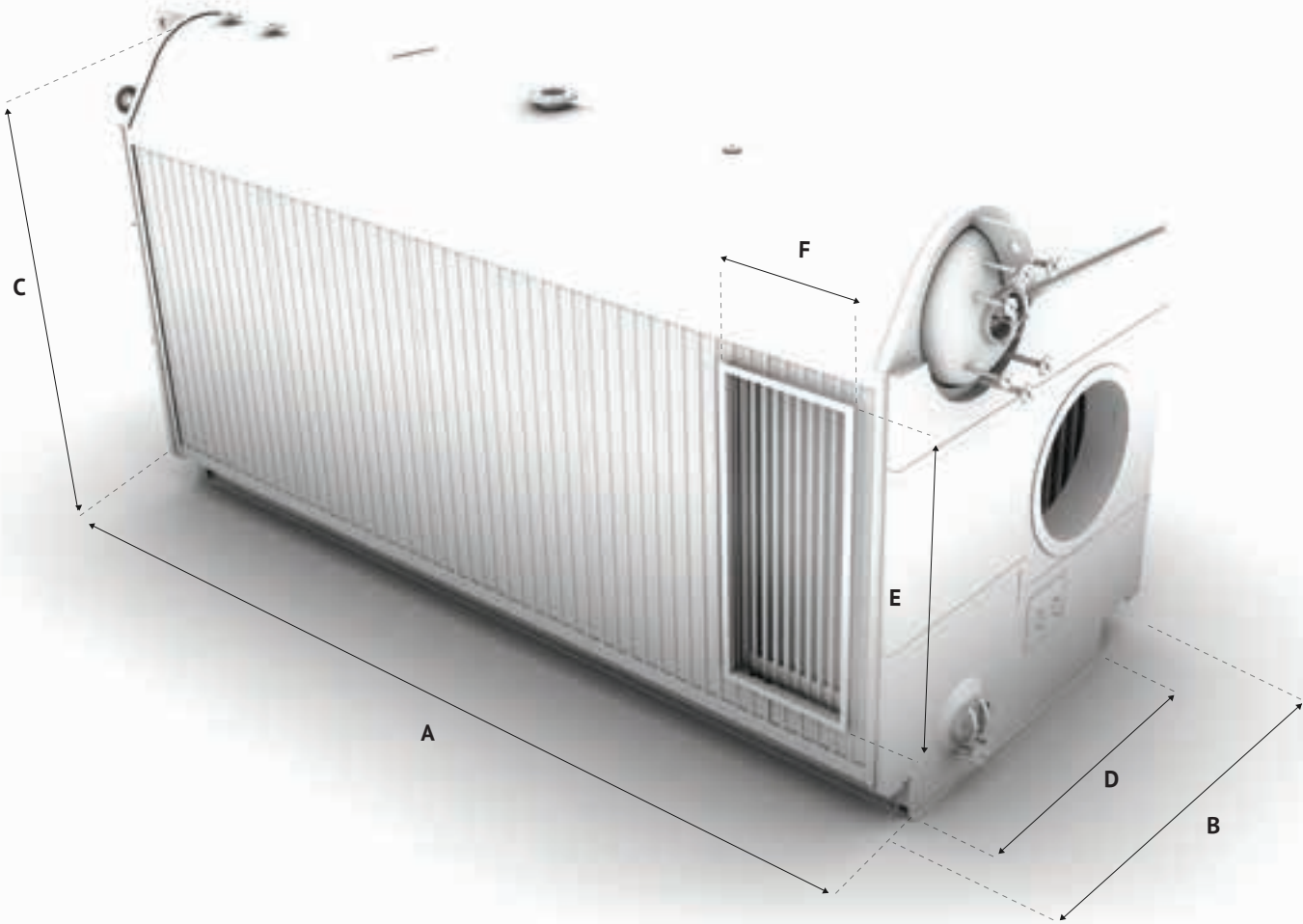
10,000 TO 200,000 PPH / 250 TO 700 PSIG



© Groupe Simoneau Inc. 2018 All rights reserved.

REQUEST INFORMATION
T : 1 800 748 3783 / 450-641-9140
WWW.GROUPESIMONEAU.COM

PHYSICAL DATA SHEET



TRADITIONAL PROVEN DESIGN FOR ULTIMATE POWER GENERATION

The D-Type watertube design represents one of the most popular configurations for watertube boilers. Commonly used for saturated steam applications with capacities up to 200,000 PPH, its two large drums will always be ready to unleash power on demand. Optional superheater or external economizer also available to meet your specific requirements.



LOW MAINTENANCE COSTS



EXTENSIVE CAPACITY RANGE



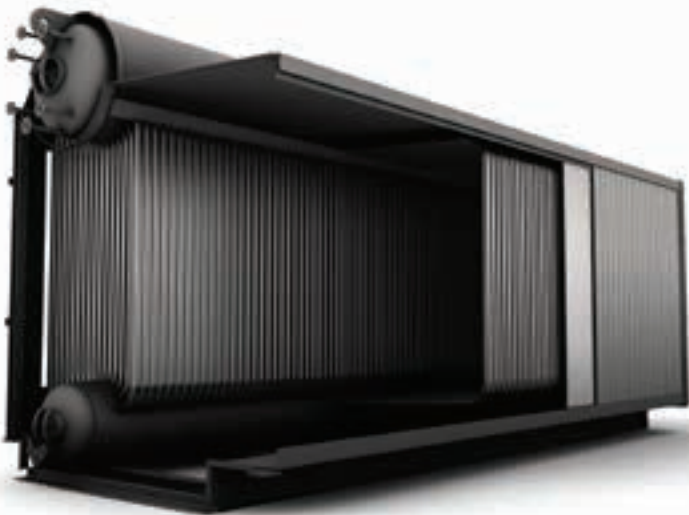
WATERWALL DESIGN BUILT



SUPERIOR STEAM QUALITY

ADVANTAGES

- Waterwall design built-in with gas tight membrane or tangent tubes
- Convective type superheaters with temperatures up to 750 °F
- Superior steam quality (1 ppm) using appropriate separation technology with a large steam drum
- Reliable source of high quality, dry, saturated steam (up to 99.9%)
- Quick load response
- Boiler system components designed specifically to provide ease of operation
- Extensive capacity range
- Excellent long-term reliability to meet commercial, industrial and institutional applications



COMBUSTION / CONTROL

LARGE SELECTION OF ADAPTABLE COMBUSTION SYSTEMS

FUEL CHOICE FLEXIBILITY

MEETS OR EXCEEDS NO_x EMISSION STANDARDS

FULL RANGE / CHOICE OF CONTROLS

D-TYPE WATERTUBE STEAM BOILER NOW AVAILABLE

Stay in the loop. Get product updates by visiting www.groupe-simoneau.com



SIMONEAU

v9 prime web
POWER TO GROW